



Preserving TEETH FOR A LIFETIME™

Chicago Midwinter Meeting

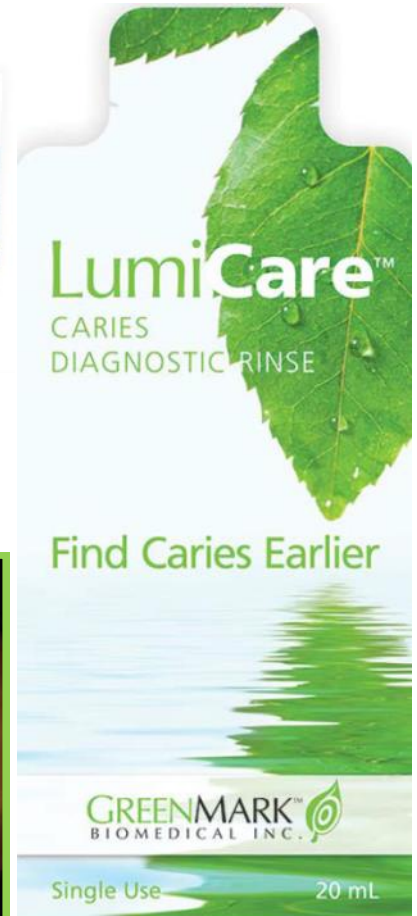
GreenMark exhibited at the Chicago Dental Society Midwinter Meeting at the McCormick Center, Feb. 20-22, 2020. What follows is a brief introduction and then a pictorial summary of the first major exhibit and “soft launch” event for the team introducing GreenMark’s technology platform and first product LumiCare™ Caries Diagnostic Rinse, to become available in 2020, pending 510(k) Clearance by FDA.

Find Caries Earlier

LumiCare™ Caries Diagnostic Rinse represents the avant-garde of preventative dental care. The rinse is an aqueous solution containing patented fluorescent sub-micron starch particles that have been functionalized to target and adhere to the subsurface of early-stage carious lesions after penetrating through surface porosities. Carious lesions are illuminated with the use of a suitable blue light and can be seen using an orange filter or glasses (see below) that enhance visualization of the lesions.

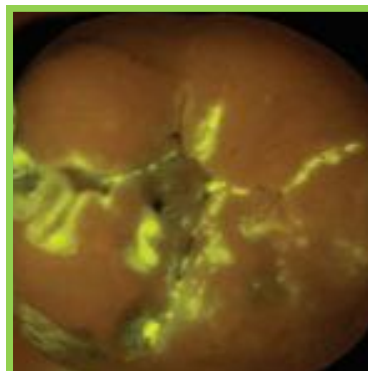


20-Pouch Dispenser Box



LumiCare™
CARIES DIAGNOSTIC RINSE

Lesions Illuminated with Dental Curing Lamp
Tooth viewed through orange glasses using a dental curing light, after a 30 second application of the LumiCare™ Caries Diagnostic Rinse, followed by a 10 second rinse with water and a quick nozzle air dry; thus, only subsurface carious lesions illuminate quickly identifying porous pre-cavities.



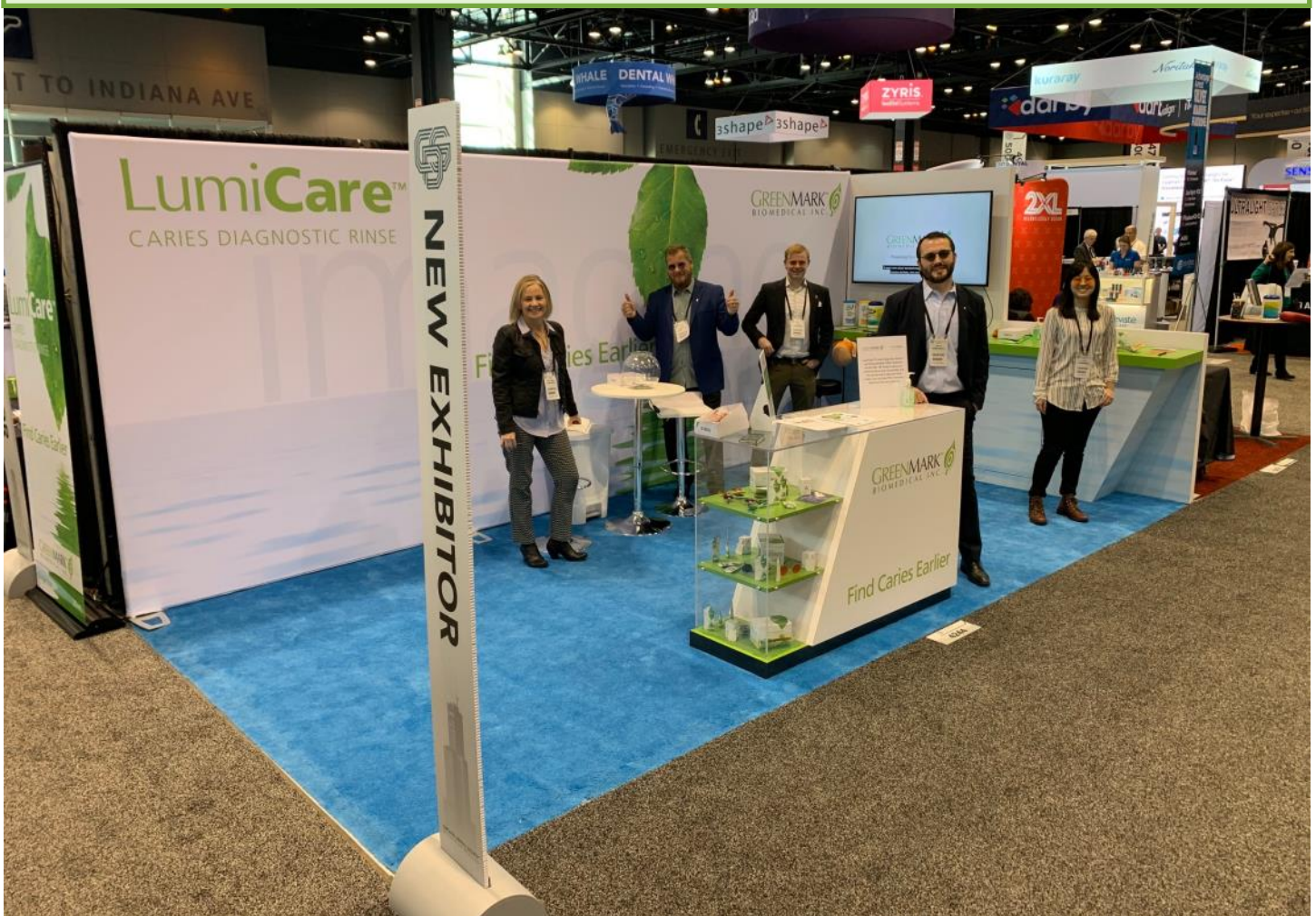
Transforming the Dental Experience

Caries, the world’s most prevalent chronic disease, affects over 95% of Americans over their lifetime. GreenMark is aiming to transform the dental experience by enabling dentists to accurately assess when to treat and make painless, natural repair possible. Small sub-micron starch particles are used to identify and diagnose porous pre-cavities at an early stage, and an advanced treatment solution is under development. GreenMark’s diagnostic product, to be used during routine dental exams, illuminates otherwise undetectable cavities with a standard dental curing light. Early cavities can be comfortably repaired with non-invasive treatments creating a much more positive dental experience for everyone.

Brand New Booth ... Can you imagine?



Ready to rock just before first visitors come ... will they imagine?



Busy from the get-go, so many visitors ... more than we imagined!



1: Many come by, enter our booth and imagine ...



2: "We have a way to find caries earlier ... would you like a demo?"



3: "Please meet Dr. Jones, co-inventor of the technology ..."



4: "Please sit down and take a look ... see if you find all of them?"



5: Once he/she sits down, they feel at home and they ... imagine!

6: ... and then they are in for the whole experience ...



Dr. J. Lennon, DMD, MS, PhD

With our personal friend, Dr. John Lennon!!!

6: ... in for the whole experience ...





Thanks to our partners and friends who ... imagined with us!



And Special Thanks to our Booth Staff